



Introduction to the Endangered Species Act

Tracy Hester

Environmental Law
Fall 2013

November 25, 2013

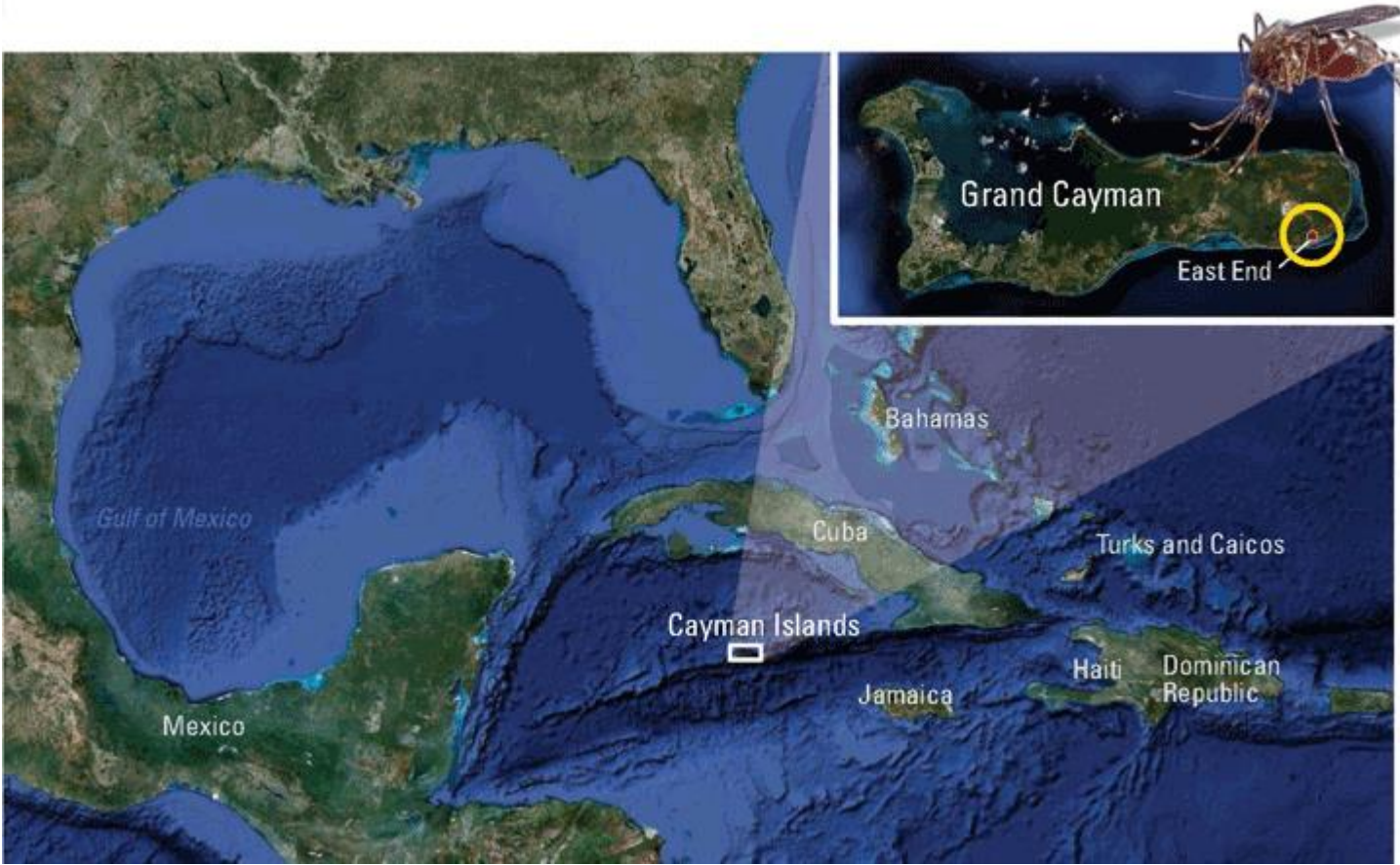
“Species” – “any subspecies of fish or wildlife or plants, and any distinct population segment of any species of vertebrate fish or wildlife which interbreeds when mature”

ESA Engines

- Listing of species as endangered or threatened and designation of critical habitat – Section 4
- Consultation and “no jeopardy” requirement for federal action – Section 7
- Prohibition on “taking” – Section 9

What is a species?

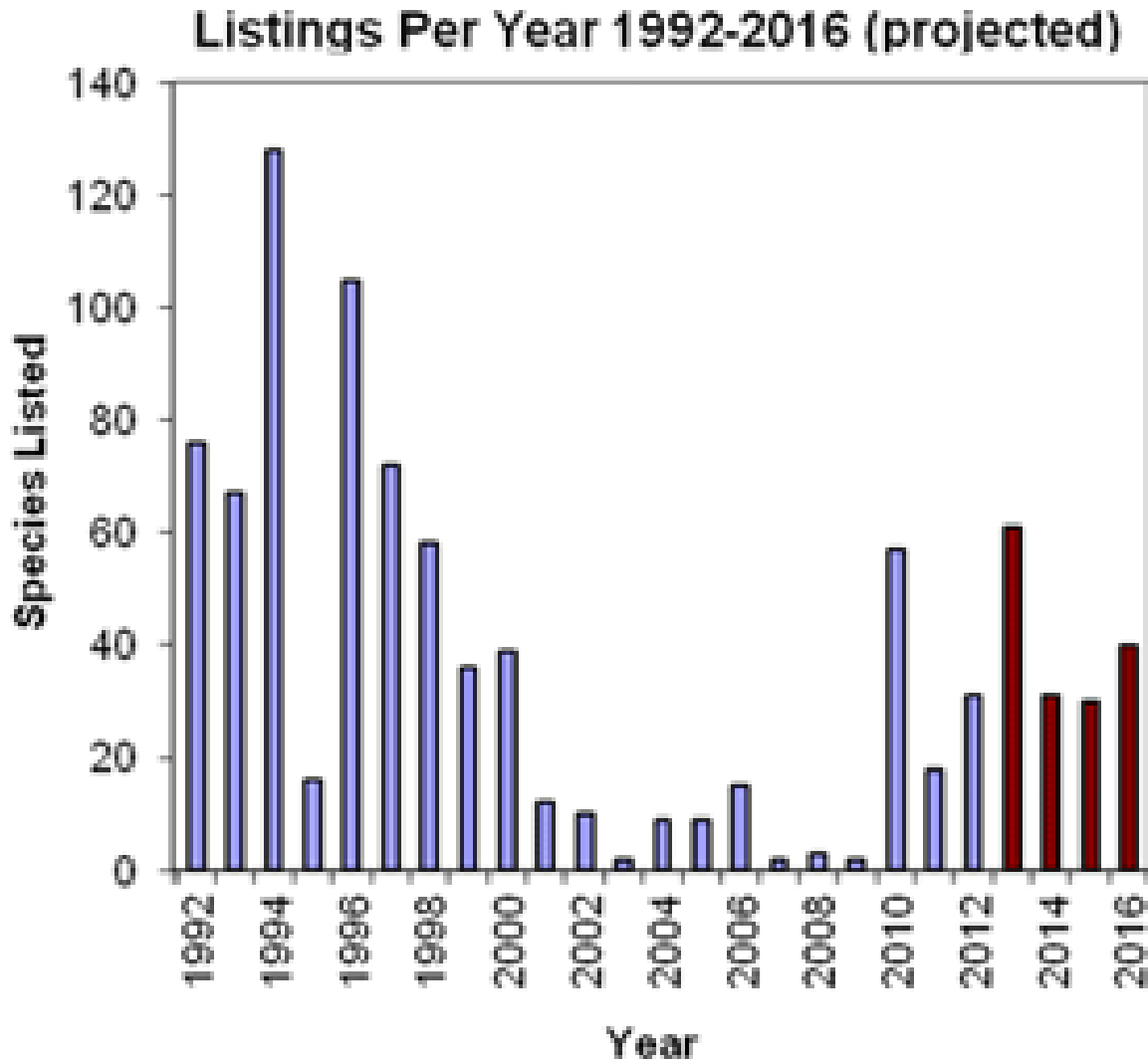




Lazarus Project

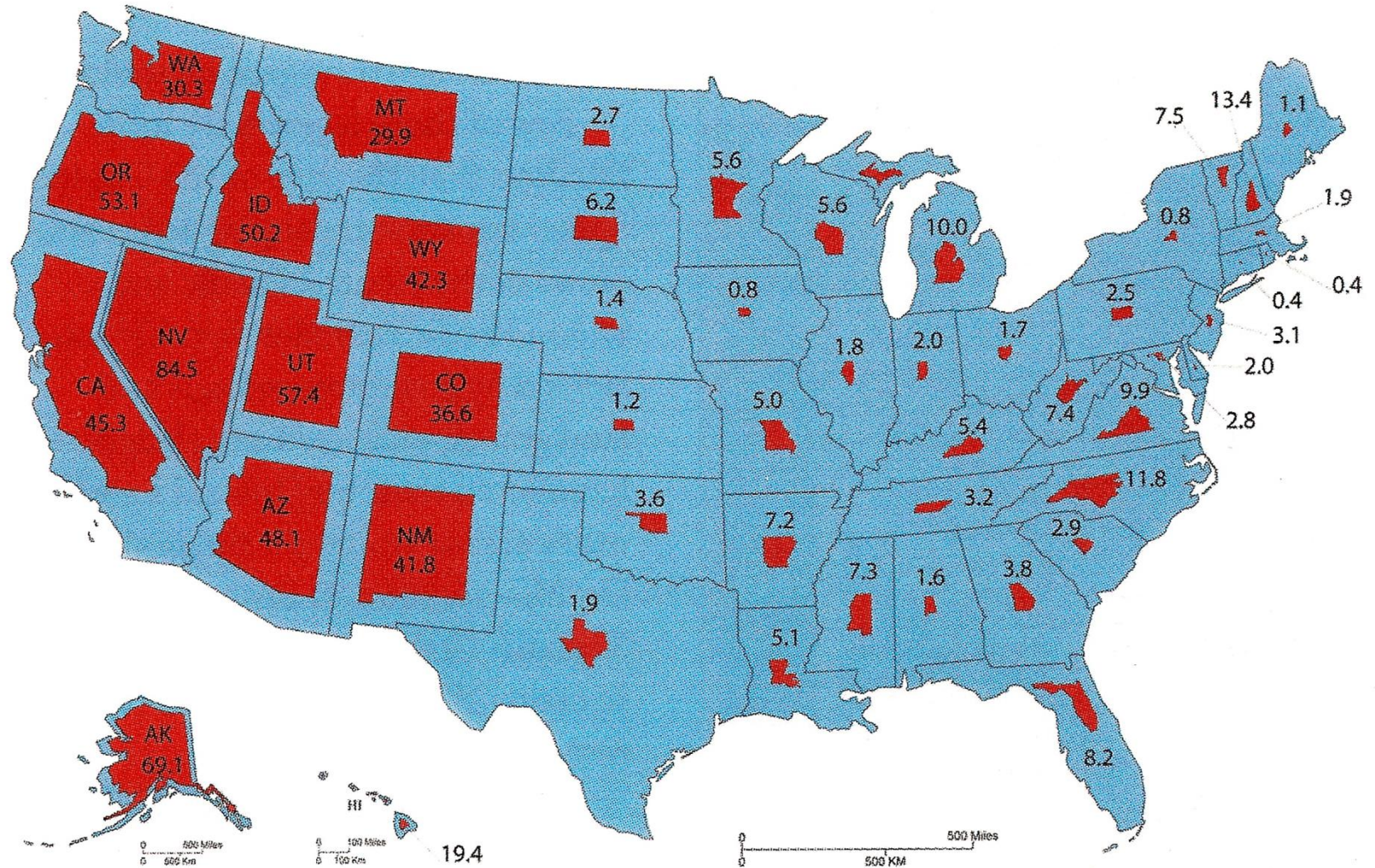


WildEarth Guardians settlement

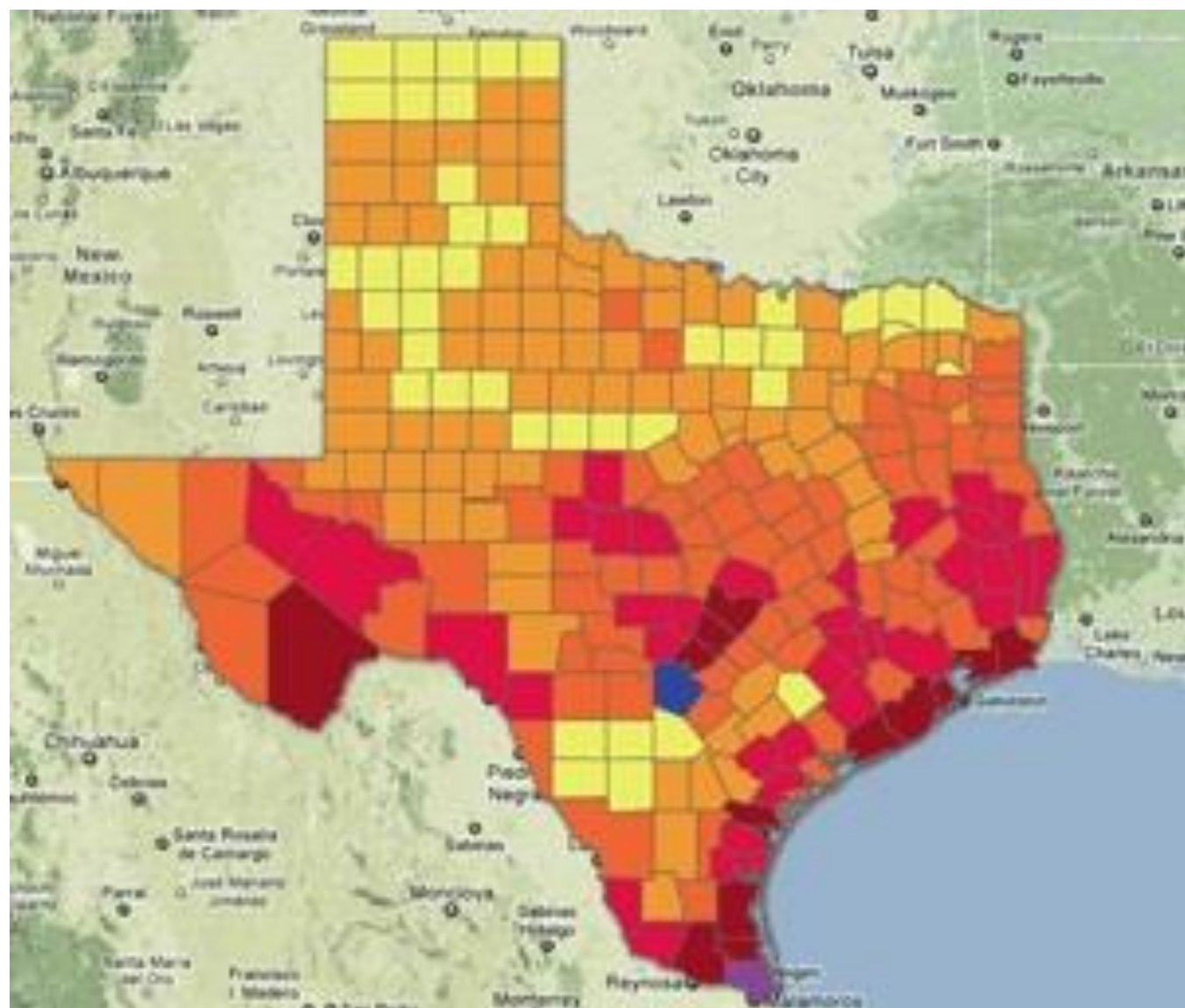


WHO OWNS THE WEST?

Federal Land as a Percentage of Total State Land Area



Data source: U.S. General Services Administration, *Federal Real Property Profile 2004*, excludes trust properties.



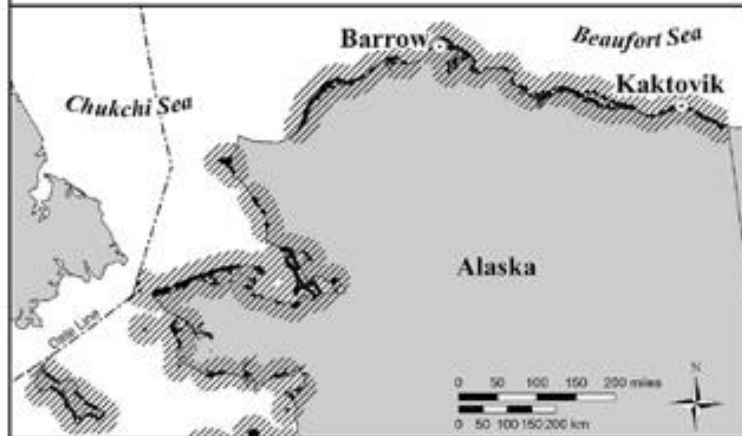
Candidate Conservation Agreements




ESA and Climate Change



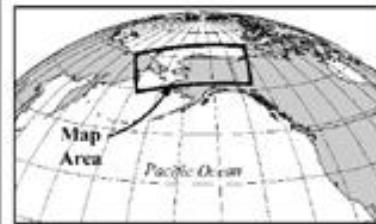
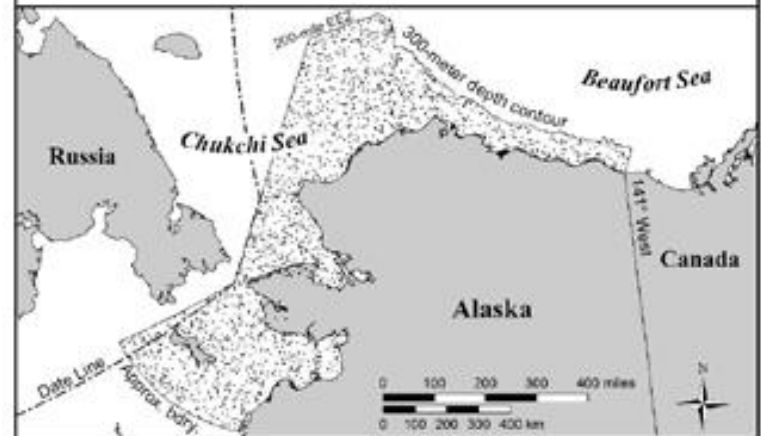
**Unit 3: Barrier Island Critical Habitat
of the Polar Bear (*Ursus maritimus*)**




Legend

 Unit 3 - Barrier Islands

**Unit 1: Sea Ice Critical Habitat
of the Polar Bear (*Ursus maritimus*)**



Legend

 Unit 1 - Sea ice habitat

